



## GTS FX™ Guide

FX trading typically requires the deposit of a small percentage of the total trade value. As the financial outcome is determined by the price movement on the total trade value, profits and losses can quickly exceed the initial deposit. Ensure you understand the risks as these products are not suitable for everyone. These products are only intended for people who are over 18.

Apple, the Apple logo, iPod, iPod touch, and iTunes are trademarks of Apple Inc., registered in the U.S. and other countries. iPhone is a trademark of Apple Inc. App Store is a service mark of Apple Inc.

# Contents

## Page Number

Logging in _____	3
Account Summary Overview _____	4
Using the Platform _____	6
1. Account Summary Tab _____	6
2. Instruments Screen _____	6
Summary account balances _____	6
Finding your market _____	6
Using Search _____	7
Using the Other > selector _____	7
3. Managing Watch Lists _____	8
Add/remove markets to Watch Lists _____	8
4. Placing a Trade _____	9
Placing a Trade – Market Order _____	9
Quotes _____	11
Closing Open Positions _____	11
Hedge Open Trades _____	12
Reverse Open Trades _____	12
Amending an Order _____	12
5. Charts _____	13
Introduction _____	13
Charting Features _____	13
a) Portrait Orientation _____	14
Top Portrait Toolbar _____	15
Lower Portrait Toolbar _____	15
b) Landscape Orientation _____	16
Landscape Toolbar _____	16
Chart Settings _____	17
Technical Analysis Views _____	18
6. More _____	18
Trading History _____	19

## Logging in

Once you have downloaded the GTS FX™ app from the app Store, simply tap icon to launch and you will be presented with the GTS FX log in page.

Select your account type as either 'Live' or 'Practice' and enter your user name and password and tap 'Login (Live)'.

You can also select the 'Remember Name' option which will save your 'User Name'.

Setup PIN, rather than an entering a password on each login a four digit PIN can be set. Simply select 'Setup PIN' and enter any memorable four digit number in the PIN and confirmation fields and select 'Apply'.

New Password, to change password select 'New Password' and enter new password and confirmation and select 'Apply'.

**Note:** this will also change your internet GTS password.

**Please note that if you do not already have one, you will need to set up a GTS account to access the GTS FX™ app**

**Note:** Once you have logged in to the app you will, by default, be presented with a Risk Disclaimer at every login. This default setting can be changed via the iPhone settings for this app.

FX Solutions  
Advantage, Trader.

Login Type **Live** Practice

User Name <username>

Remember Name

Password <password>

Setup PIN New Password

Login (Live)

GTS FX  
Version 1.0.0 (Build 39.902.1509)

Select New PIN

Enter a numeric PIN for use during future logins instead of entering your password.

PIN <PIN>

Re-enter PIN <PIN>

Cancel Login

Setup New Password

The new password will be applied on login.

New Password <New Password>

Re-enter <Re-enter>

Cancel Login

# Account Summary Overview

## Key

### A1 Contact Us

- Contact the Client Management team by telephone or e-mail

### A2 Account Selector

- Tap to select account where multiple accounts have been assigned to single login.

### A3 Account

- Account number is active session account
- Number of accounts linked to login
- Type of account (Live or Practice)

### A4 Total Open Trades

- Number of open trades for account
- Trades in profit
- Trades in loss

### A5 Balance

- Cash - Initial Deposit plus/minus any additional Deposits, Withdrawals, Realized P/L, Premiums, Commissions, Customer Rebates, Adjustments
- Equity - Balance plus MTM P/L

### A6 P/L

- MTM – (Unrealized P/L) Profit and Loss on Open trades at the current market rate
- Net - (Realized P/L) Profit and Loss on Closed Trades, premiums and commissions that are added to or deducted from the Cash Balance.

### A7 Margin

- Used Margin - collateral to cover any potential losses from adverse movements in price open trades.
- Usable /available margin - available margin for existing or future trades.
- % of used margin
- Used margin indicator bar

### A8 More Margin

- Premiums – (Cost of Carry) The cost or benefit associated with carrying an open position from one day to the next
- Commissions - Round Turn Charged deducted from the cash balance.
- FX Lot AMT – Trade units. E.g. Lot AMT= 1 and Unit Size = 10,000 the default trade amount will be 10,000
- Unit Size – Adjustable default trade amount; range from 1,000 – 1,000,000
- Leverage - The amount, expressed as a multiple, by which the notional amount traded exceeds the margin required to trade. For example, if the notional amount traded is \$100,000 dollars and the required margin is \$2,000, would be expressed as 50 times leverage (\$100,000/\$2000).

A1 -

A2 -

A3 -

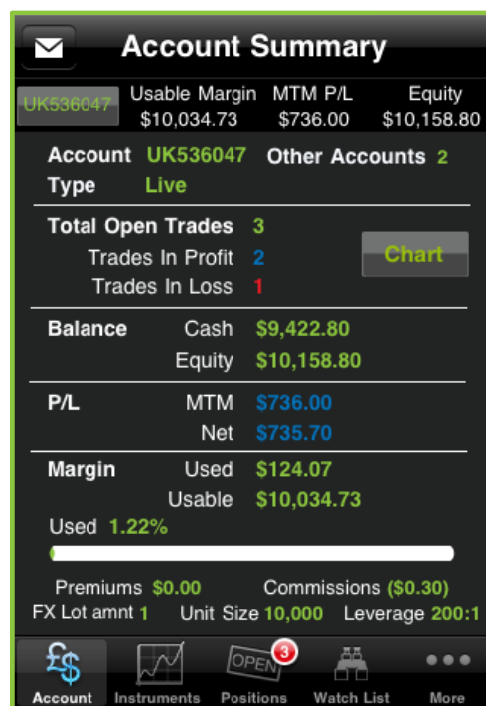
A4 -

A5 -

A6 -

A7 -

A8 -



A9

A10

A11

A12

A13

#### **A9 Account**

- View account
- 

#### **A10 Instruments**

- View available markets
- 

#### **A11 Positions Tab**

- Access your open positions and open orders
  - This is where you can amend/close your open positions and orders
- 

#### **A12 Watch List**

- Access your personalised Watch Lists
- 

#### **A13 More**

- Access your:
  - History – your trading history
  - Pending Orders
  - News
  - Messages – trade messages
-

# Using the Platform

## 1. Account Summary Tab

When you logon to GTS FX you will land on the Account Summary tab.

This section allows you to view your available margin and account summary at a glance.

<b>Account</b>	Current active account
<b>Usable Margin</b>	Is the amount of unencumbered funds in the account, which can be used as margin for existing or new positions.
<b>MTM P&amp;L</b>	is the unrealized sum of profits/losses across all open positions
<b>Equity</b>	is the sum of your total cash and unrealized profits/losses across all open positions

UK536047	Usable Margin	MTM P/L	Equity
	\$9,947.90	\$653.00	\$10,070.33

## 2. Instrument Screen

### Summary account balances

You can view your account balances on multiple tabs within GTS FX such as the Markets, Positions and Watch List tabs. Your account balances will list your total Usable Margin, MTM P/L and Equity to give you maximum awareness of your account.

### Finding your market

The Markets page is preset to include 2 search buttons:

<b>Search</b>	search for markets
<b>Other</b>	search using market groups. E.g. select either FX, Indices, Metals

### How to search

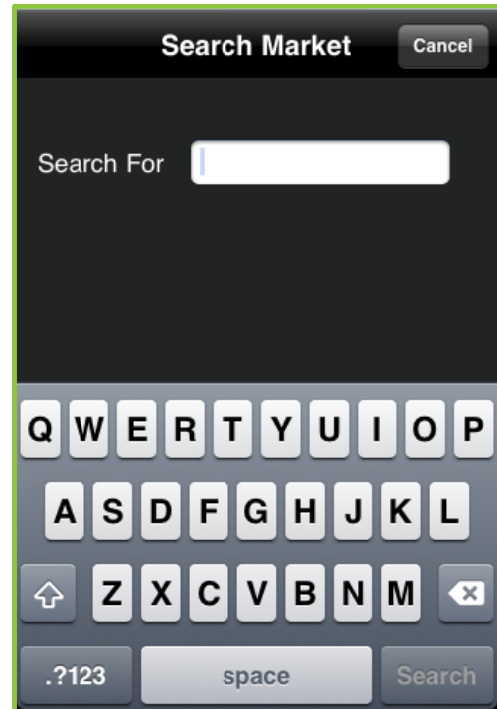
All searches are based on the FX Solutions 'Instruments' and entering 1-3 letters in the search field will return a listing of all products which match the search criteria. This listing can be used to view, analyze and trade individual instruments. In addition instruments can be added to a watch list where a list of favorite or most frequently traded instruments can be viewed and stored in one list.

	Bid	Ask	High	Low	Status
Trade GBP/USD	1.6041	1.6045	1.6216	1.6019	9/6/11 9:07:08 AM >
Trade EUR/USD	1.4057	1.4060	1.4279	1.4029	9/6/11 9:07:08 AM >
Trade USD/JPY	77.48	77.51	77.62	76.70	9/6/11 9:07:08 AM >
Trade USD/CHF	0.8019	0.8023	0.8023	0.7839	9/6/11 4:01:56 AM >
Trade AUD/USD	1.0530	1.0534	1.0651	1.0519	9/6/11 9:07:08 AM >
Trade USD/CAD	0.9940	0.9944	0.9965	0.9863	9/6/11 9:07:08 AM >
Trade EUR/GBP	0.8762	0.8766	0.8822	0.8731	9/6/11 9:07:08 AM >

## Using search

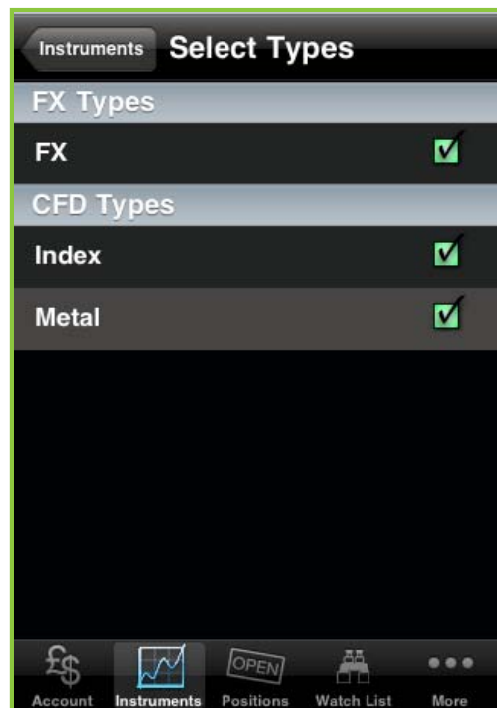
A 1-3 character letter search criteria needs to be entered from the 'Search' tab to display all available markets matching the criteria. For example enter 'USD' to view all markets that contain USD in the product name.

**Note:** If the full instrument name is known it can be entered in the search field limiting the search results. As a rule 3 letters should be sufficient to find all instruments.



## Using the 'Other' > selector

Increase or limit the available search criteria by market type e.g. FX, Index and Metal. Any combination of type can be selected to include one, some, none or all product types, depending on your account regulator.



### 3. Managing Watch Lists

You can monitor your favorite markets by grouping them together in a Watch List.

Watch List					
	Bid	Ask	High	Low	Status
<b>UK536047</b> Usable Margin \$10,030.78 MTM P/L \$732.00 Equity \$10,154.80					
Trade	1.6201	1.6205	1.6256	1.6171	9/2/11 12:26:01 PM >
Trade	0.8760	0.8764	0.8824	0.8760	9/2/11 12:26:01 PM >

#### Add/remove instrument from Watch List

To add a market to the Watch List you must first tap on the market and then the 'Add to Other' button.

To remove an item from a Watch List tap 'edit' within the Watch List tab and select delete on the item you wish to remove, tap 'Done' to finish editing.

Watch List					
	Bid	Ask	High	Low	Status
<b>UK536047</b> Usable Margin \$10,034.24 MTM P/L \$735.50 Equity \$10,158.30					
[-]					GBP/USD [≡]
[-]					EUR/GBP [≡]
[-]					GBP/JPY [≡]

Account Instruments Positions **Watch List** More

## 4. Placing a Trade

Selecting an instrument from either a search list or watch list, displays a detailed view for the instrument. From this screen trades and orders can be entered and orders edited for each instrument.

Orders can be added in two ways:

- Market Order
- Entry Order

Market Order – the market order is entered and executed with ‘stops & limits’ entered post execution (after the trade).

Entry Order – this is a resting order which will be triggered by a future event (price) either to open a new position on ‘Entry Stop’ or ‘Entry Limit’ basis.



### Placing a Trade - Market Order

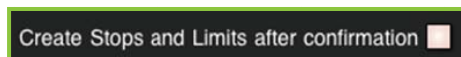
#### Step 1

A dealing ticket is displayed in the ‘Place Market Order’ screen; select direction of trade to either ‘Sell’ or ‘Buy’ and enter the trade quantity.

*Note: Once the Quantity field is selected by tapping, the default value of “1” will disappear allowing the desired value to be entered.*

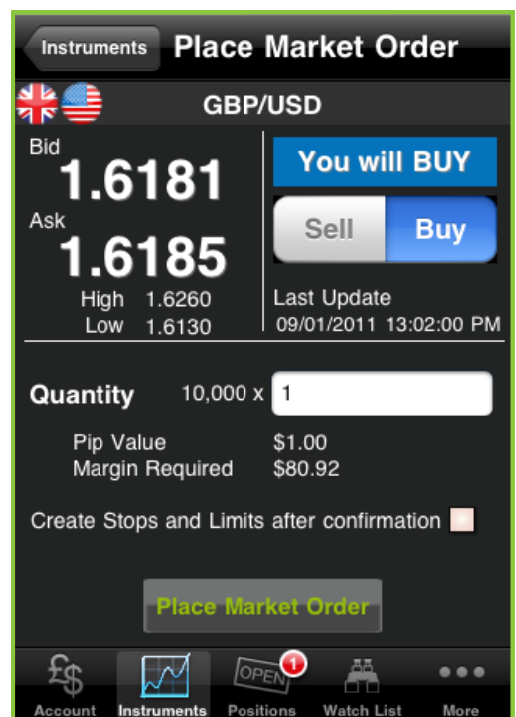
#### Step 2

Optional - select the create stops and limits tick box to automatically open the stops and limit window after the trade confirmation.

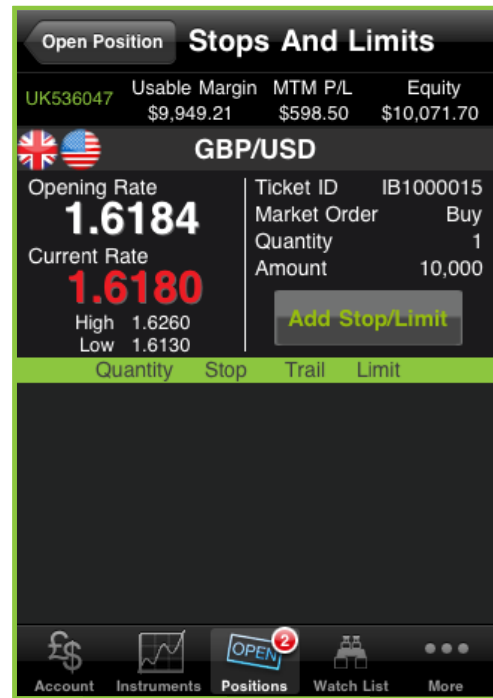


#### Step 3

Select ‘Place Market Order’ to submit trade, a ‘Market Order Confirmation’ screen will be shown displaying the contract details. Tap ‘OK’ to proceed, (note you have already traded previous to selecting OK).



If you wish to attach a linked Stop or linked Limit order to the trade then tap the 'Add Stop/Limit' button on the 'Stops and Limit' screen.

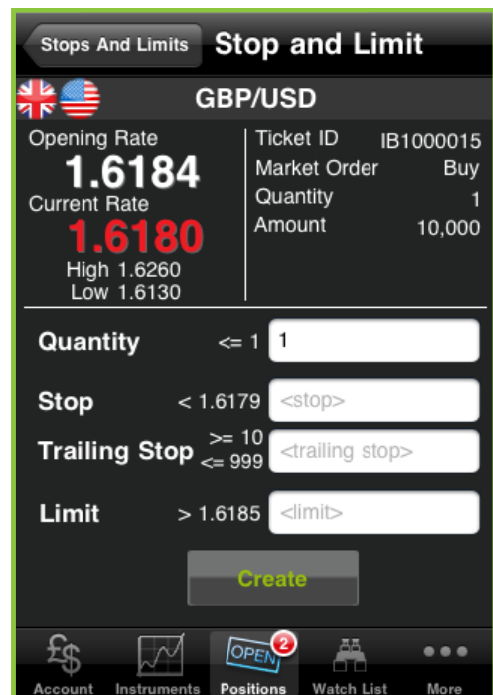


Subsequent orders will be added on a good till cancelled (GTC) basis and will be against all or part of the open position. Add the quantity then select either a stop or a trailing stop amount and/or a limit order price.

Tap 'Create' when done.

**Step 4**

After tapping 'Create' you will receive a confirmation message with an 'OK' button. Tap the 'OK' button and you will return to the 'Stops And Limits' screen.



## Quotes

Where the requested trade size is greater than the maximum market size, a request to trade will be sent to a dealer for confirmation.

## Closing Open Positions

To close or partially close open positions tap the 'Close' buttons from the Open Positions screen or via the 'Open Positions' details screen.

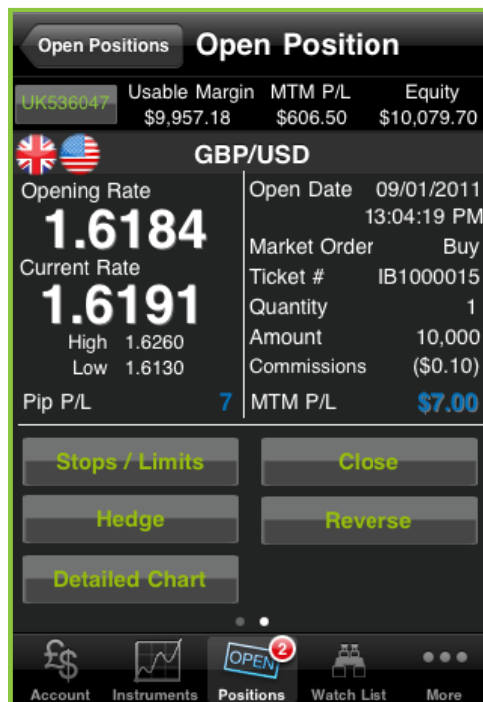
**Note:** After selecting the close button the quantity and direction of the order will automatically be set to close out the entire open trade. To partially close an open trade, edit the 'Quantity' before selecting either 'Buy' or 'Sell'.



## Hedge Open Trades

Open trades can be partially or fully hedged from the open positions screen, by selecting the 'Hedge' button.

**Note:** After selecting the 'Hedge' button the quantity and direction of the order will automatically be set to hedge the entire open trade. To partially hedge an open trade, edit the 'Quantity' before selecting either 'Buy' or 'Sell'.



## Reverse Open Trades

Open trades can be reversed in their entirety (there is not an option to partially reverse).

## Amending an Order

Once an order has been placed, you will then have the option to delete or edit the details of this order. All orders, be they new or contingent orders can be edited from the orders section of the Positions tab. Simply tap on the order you wish to amend, make the relevant changes and click on Update Orders.

## 5. Charts

### Introduction

Streaming charts through GTS FX offers you a comprehensive streaming charting package, complete with technical analysis tools.

The streaming charts element can be accessed from within the GTS FX application, using the 'Detailed Chart' button. This button can be found when you tap on a market to show further options.



### Charting Features

The streaming charts package provides you with the ability to analyze historical data and identify price patterns and trends, with historical and live streaming prices.

Charting utilizes both the portrait and landscape orientations of the iPhone, meaning you can take advantage of customizable indicators in portrait view, or a full screen, streaming and historical chart in landscape view.

Technical indicators, such as Stochastic Oscillator, Relative Strength Index (RSI) and Bollinger Bands are available, while standard indicators including Moving Average (MA) and Fibonacci retracement levels are also offered, among others.

This guide explores the various layouts of the streaming charts package and the additional charting tools that are available to you.

## a) Portrait Orientation

Upon activation, the streaming charts will flip into view.

Streaming charts in portrait view shows the chosen market's historical and streaming price chart in the upper part of the screen. In the bottom part of the screen, we show three of our most commonly used indicators: Relative Strength Index (RSI), Stochastic Oscillator and Moving Average Convergence-Divergence (MACD).

It is possible to scroll left and right to see more market data by swiping your finger left and right anywhere in the top part of the screen. Swiping your finger left and right on the bottom of the screen controls the price cursor (the grey vertical line), which, when resting on a chosen price point, shows the price information for that point in time at the very top of the chart.

This information includes 'Open/High/Low/Close' values, as well as 'Date/Time'. Also at the top of the screen, market name and current price are displayed.

The chart view can also be customised using pinch gestures, to zoom in and out.

### Key

A1	Exits Charting
A2	Previous Market
A3	Next Market
A4	Select a Chart Time Period
A5	Chart Settings
A6	Add High/Resistance Line
A7	Add Low/Support Line
A8	Market Detail
A9	Current Price
A10	Jump to Latest Market Price
A11	Price Cursor Line
A12	Market Name



## Top Portrait Toolbar

---



This button returns the user to the detailed market view.

---



These buttons scroll between markets, based on the markets view from which you loaded the streaming charts.

---



This button snaps the price cursor (the grey vertical line) back to the latest streaming price point.

---

## Lower Portrait Toolbar

---



This button is used to change the chart time period. The time period is set to 5 minutes by default, but the next time you use the charting application, the period used last will be shown as default.

---



These buttons can be used to plot resistance and support lines. When the 'High/Low' buttons are tapped, the lines are placed onto the graph, based on the price high & low for the point selected by the price cursor. When the 'High/Low' buttons are highlighted, they can be moved up and down by sliding them up and down with your finger. Tap on the 'High/Low' button again to fix the lines so that they do not move when the screen is touched.

These lines are removed when you exit the chart.

---



Further basic and advanced chart settings, including the chart type and indicator variables, can be amended from the chart settings view. See the chart settings section for further information.

---

## b) Landscape Orientation

Landscape streaming charts enlarges the main chart to fill the entire screen. Like in portrait orientation, it is possible to scroll left and right to see more market data by swiping in the top part of the screen, move the price cursor using the bottom part of the screen, and use pinch gestures to zoom in and out.

B1 Select a Chart Time Period

B2 Add Fibonacci Retracement Levels

B3 Flip Fibonacci Retracement Levels

B4 Add High/Resistance Line

B5 Add Low/Support Line

B6 Percentage Change

B7 Previous Market

B8 Next Market

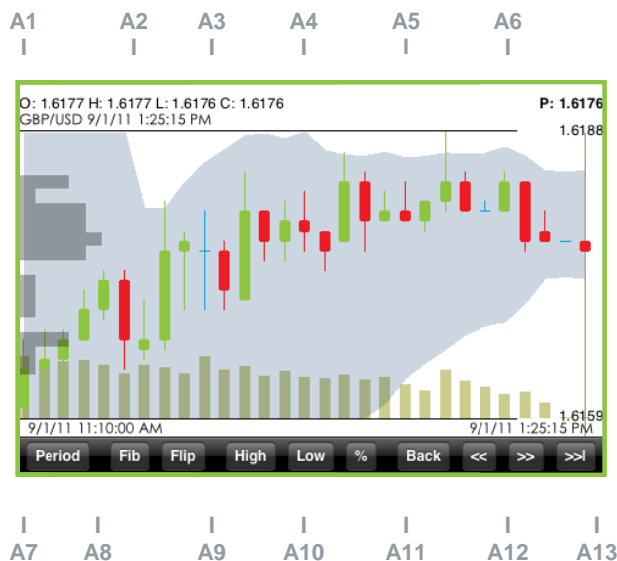
B9 Jump to Latest Market Price

B10 Price Information

B11 Current Price

B12 Price Cursor

B13 Market Name



## Landscape Toolbar

In landscape orientation only one toolbar is shown, at the bottom of the screen.

**Period** This button is used to change the chart time period. The time period is set to 5 minutes by default, but the app will remember the last period used.

**Fib** The 'Fib' button plots Fibonacci retracement levels onto the graph. Like the 'High/Low' buttons, the Fibonacci levels can be dragged left and right, up and down while the button is active. The levels can also be resized using pinch gesturing. The 'Flip' button flips the levels from default 100% as the top level, to 100% as the bottom level.

**Flip**

**High** As for portrait charting, the 'High' and 'Low' buttons enable support and resistance lines to be plotted on the chart.

**Low** These lines are removed when you exit the chart.



This button enables the user to see the percentage change of the market price between two points. Simply move the price cursor (by swiping along the bottom of the screen) to the point from which you'd like to measure, press the % button, and then drag from that point to see the percentage change.




These buttons scroll between markets, based on the 'Markets View' from which you loaded the streaming charts.



This button snaps the chart back to the current streaming price.

---

## Chart Settings

The chart settings view can be accessed by tapping the  button on the lower toolbar in portrait mode. In the chart settings, users can change the following settings of the chart view:

- Chart type: Candle, Line, Bar
- Relative Strength Index (RSI) o RSI periods
  - o Wilders RSI – On/Off
  - o Use 80/20 RSI values  
RSI will show 70/30 values when OFF
- Moving Average (MA)
  - o On/Off
  - o MA periods
- Exponential Moving Average (EMA)
  - o On/Off
- Stochastic periods
- Moving Average Convergence-Divergence (MACD) periods
- Bollinger Bands
  - o On/Off
  - o Bollinger periods
- Bollinger EMA – On/Off
- Show H/L Price – On/Off
  - o This toggles the display of the price of the High/Low lines
- Stoch/MACD colours – On/Off
  - o This toggles colours to be displayed on the Stochastic and MACD indicators

Click 'Done' to save your changes, or 'Cancel' to dismiss any changes.

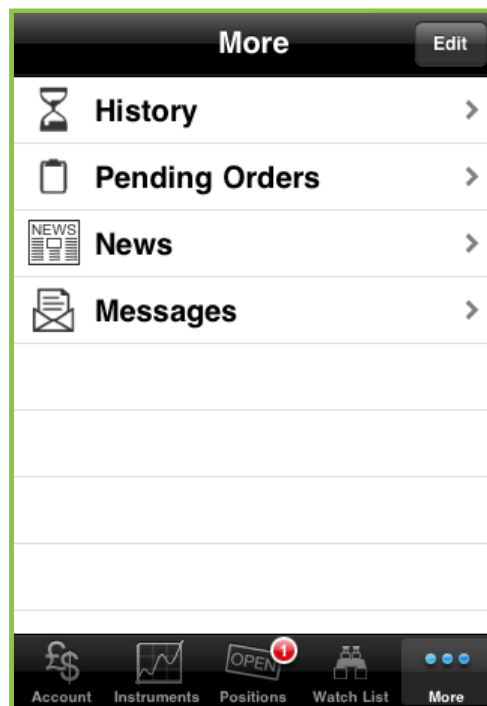
## Technical Analysis Views

Technical indicators can be viewed in the following orientations:

Portrait	Landscape
Relative Strength Index (RSI)	Moving Average (MA)
Stochastic Oscillator	Exponential Moving Average (EMA)
Moving Average (MA)	Bollinger Bands
Moving Average Convergence-Divergence (MACD)	Bollinger Exponential Moving Average (Bollinger EMA)
Exponential Moving Average (EMA)	

## 7. More

The More tab gives you access to your Trading History, Pending Orders, Streaming News and Trade Messages.



## Trading History

This tab allows you to view a history of your Trades as well as any cash flow that has gone through your account. By clicking on each entry, you can view the specific details relating to that Trade including:

- Instrument
- Buy / Sell
- Order Type:
- Date & time of trade
- Opening price
- Closing price
- Ticket number
- Amount
- Order Status

More		Trading History			
UK381216	Usable Margin	MTM P/L	Equity		
	\$18,954.98	-\$5.58	\$19,107.48		
Details	B/S	OT	Amount	Price	Status
GBP/USD			UK381216	06/06/2011 13:49:03 PM	
FB1000317	B	MO	10,000	1.6398	Executed
GBP/USD			UK381216	06/01/2011 15:27:27 PM	
EB1001270	S	S	130,000	1.6405	Executed
GBP/USD			UK381216	06/01/2011 15:17:00 PM	
EB1001270	S	S	130,000	1.6410	Created
GBP/USD			UK381216	06/01/2011 15:17:00 PM	
EB1001270	S	S	130,000	1.6400	Cancelled
GBP/USD			UK381216	06/01/2011 15:12:32 PM	
EB1001270	S	S	130,000	1.6400	Created
GBP/USD			UK381216	06/01/2011 15:11:59 PM	
EB1001271	S	CT	200,000	1.6417	Executed
GBP/USD			UK381216	06/01/2011 15:11:53 PM	
EB1001272	B	CT	170,000	1.6417	Executed
GBP/USD			UK381216	06/01/2011 15:11:49 PM	

Account
Instruments
Positions
Watch List
More